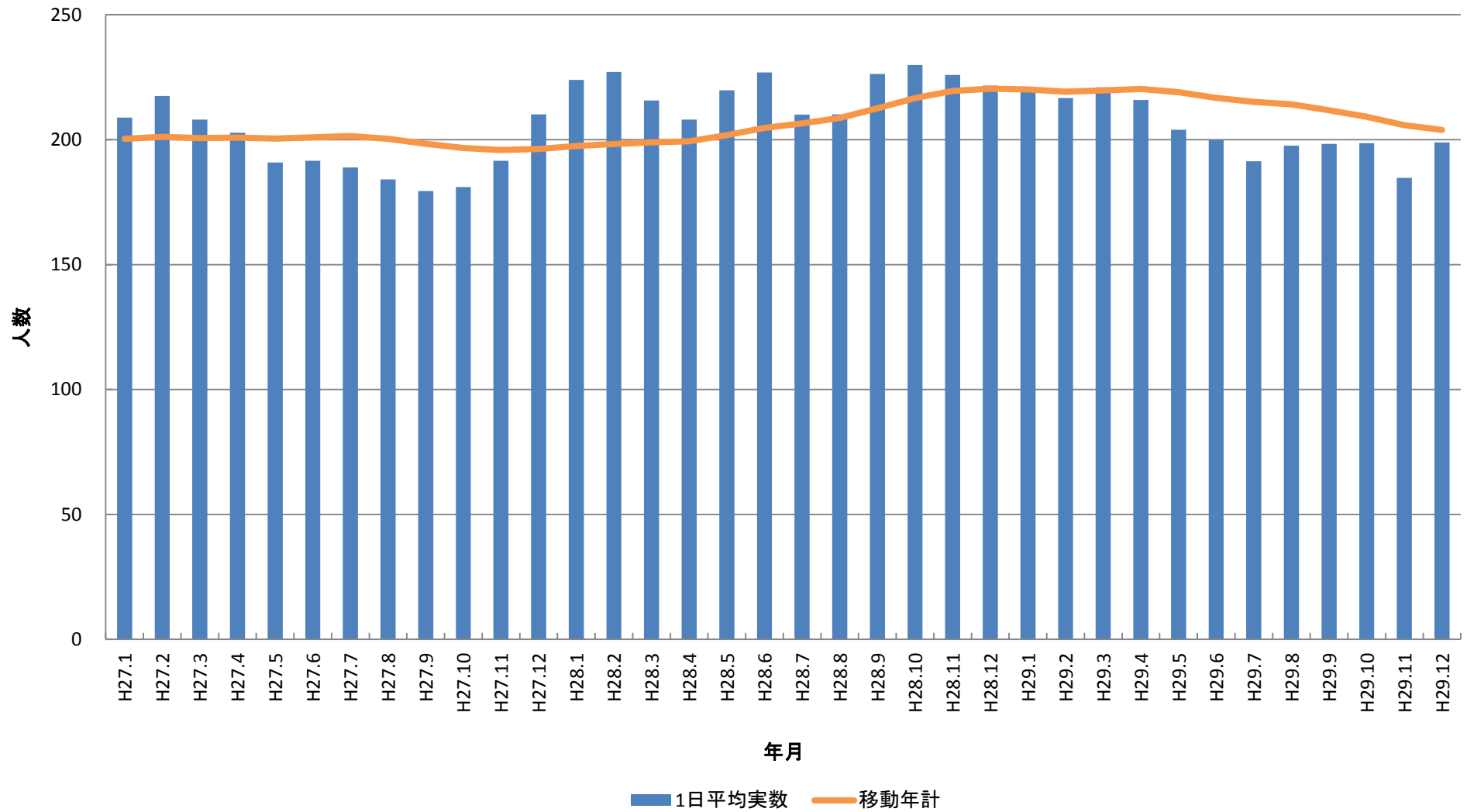
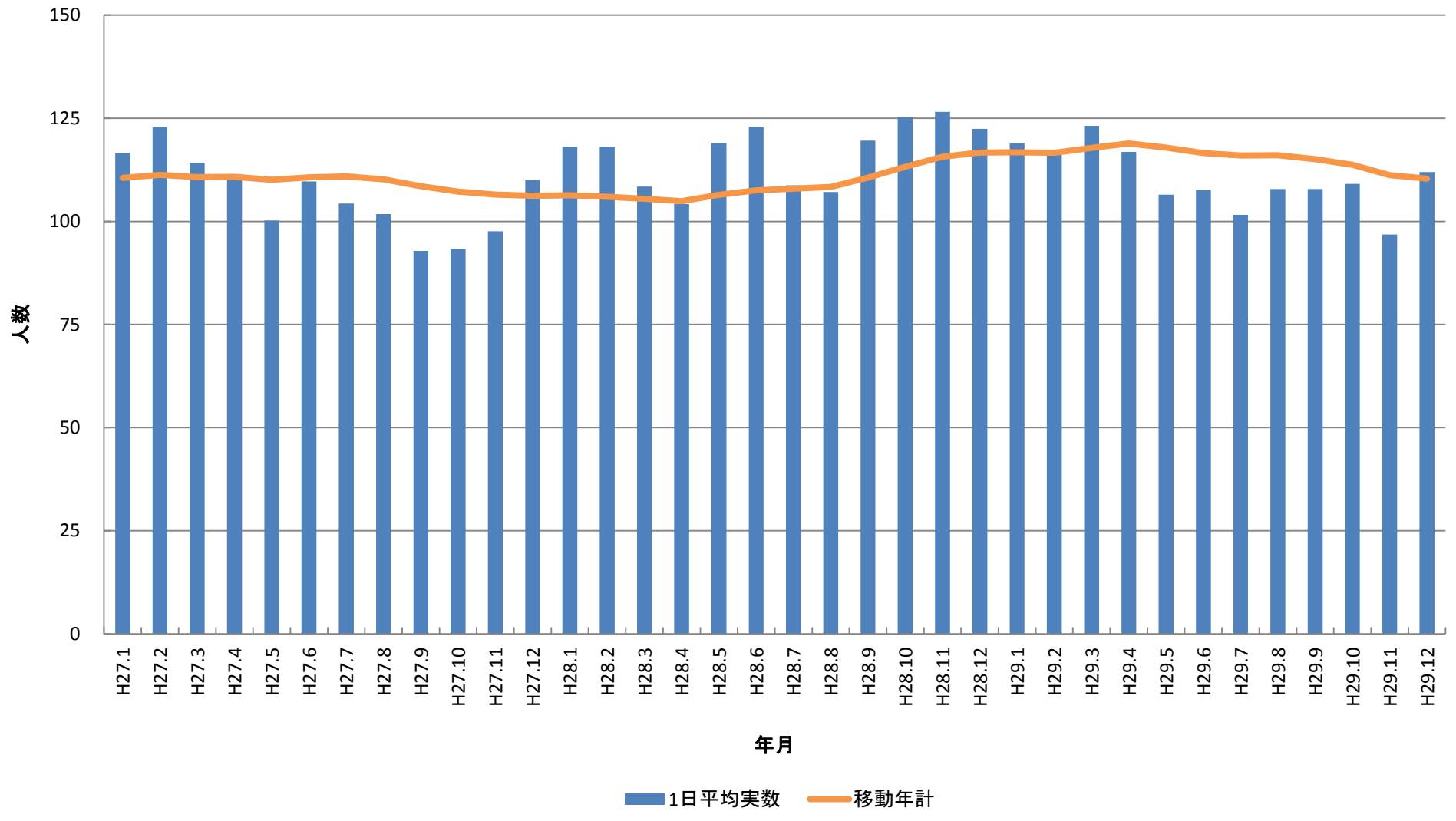


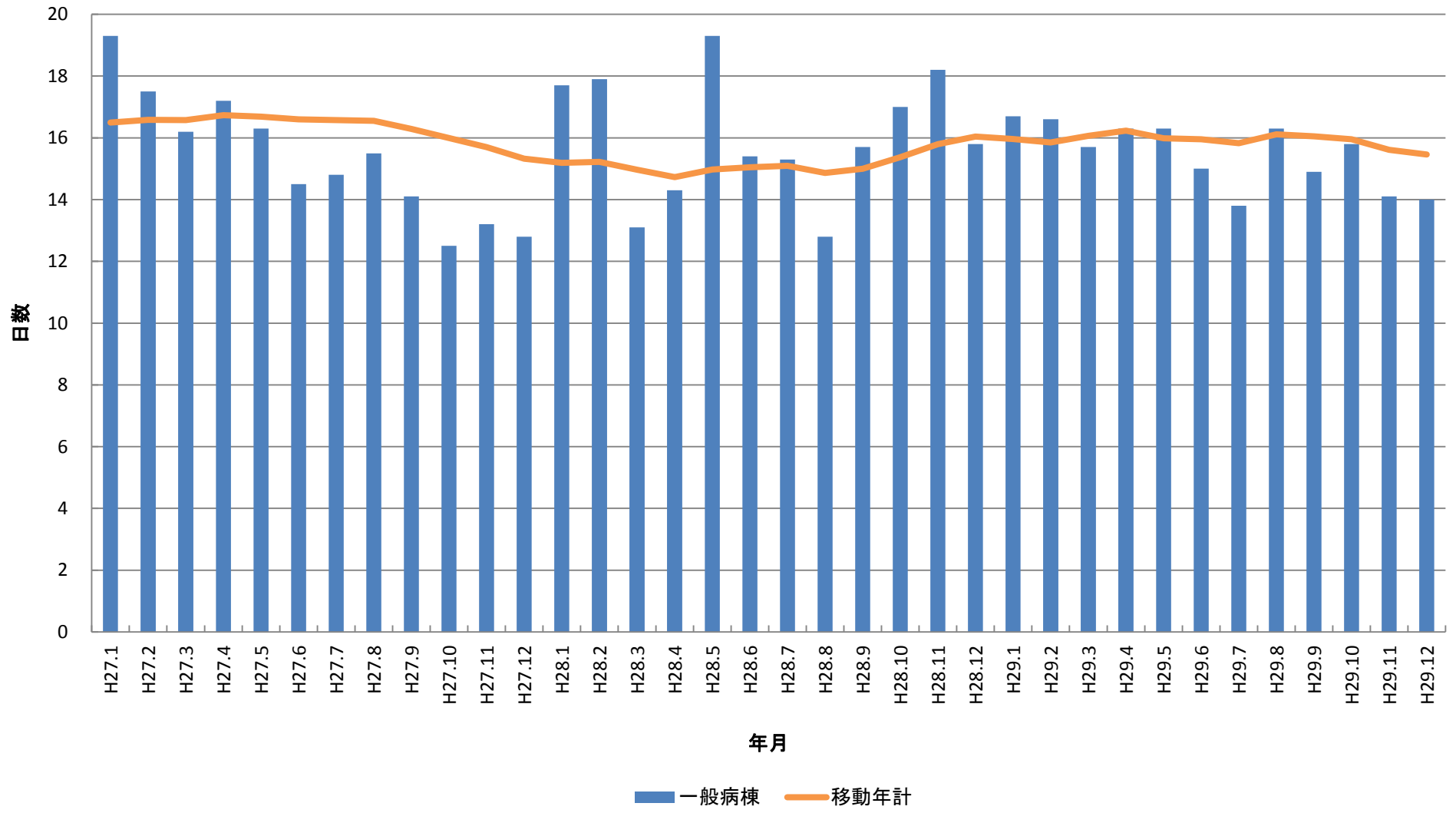
入院在院患者統計



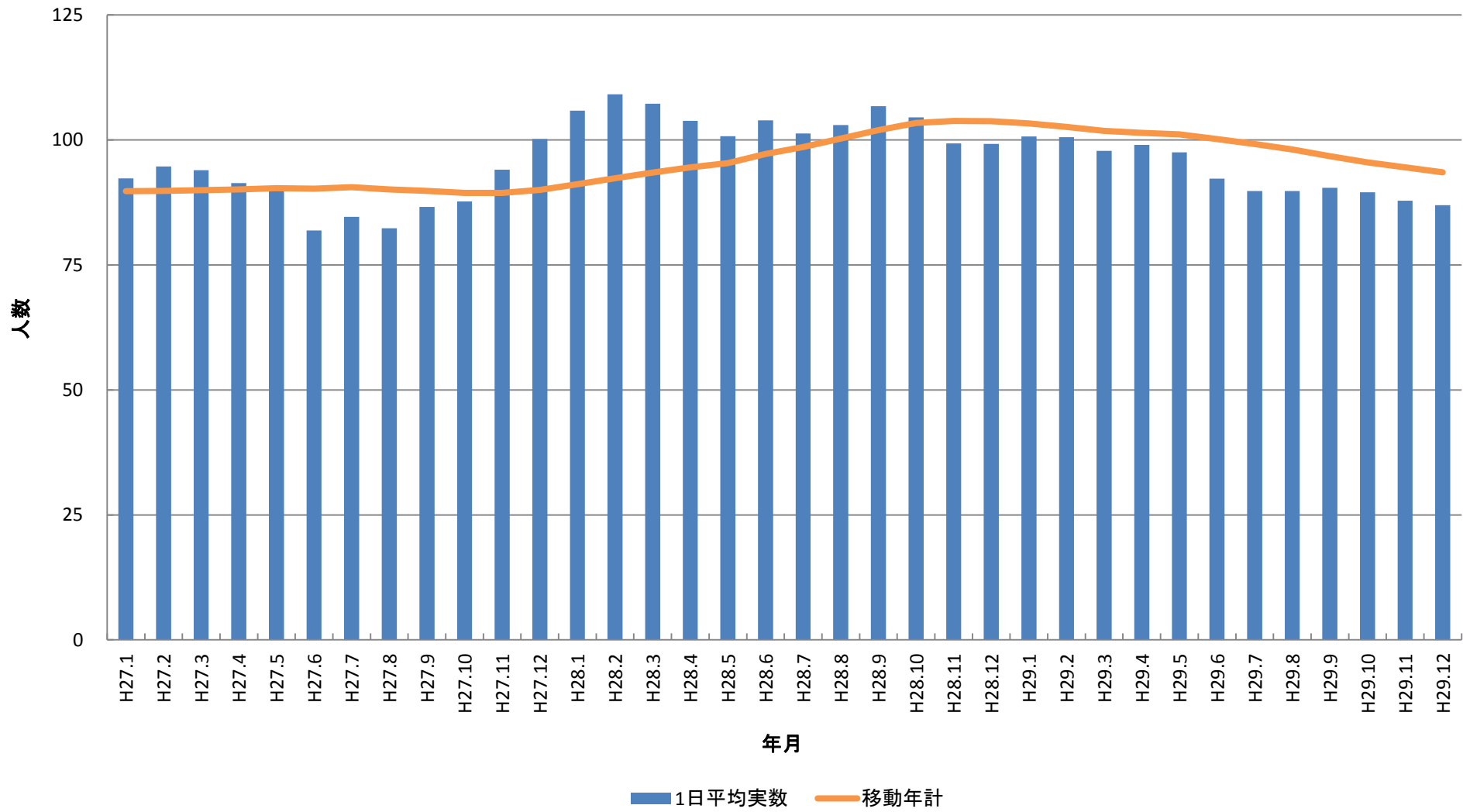
一般病棟在院患者統計



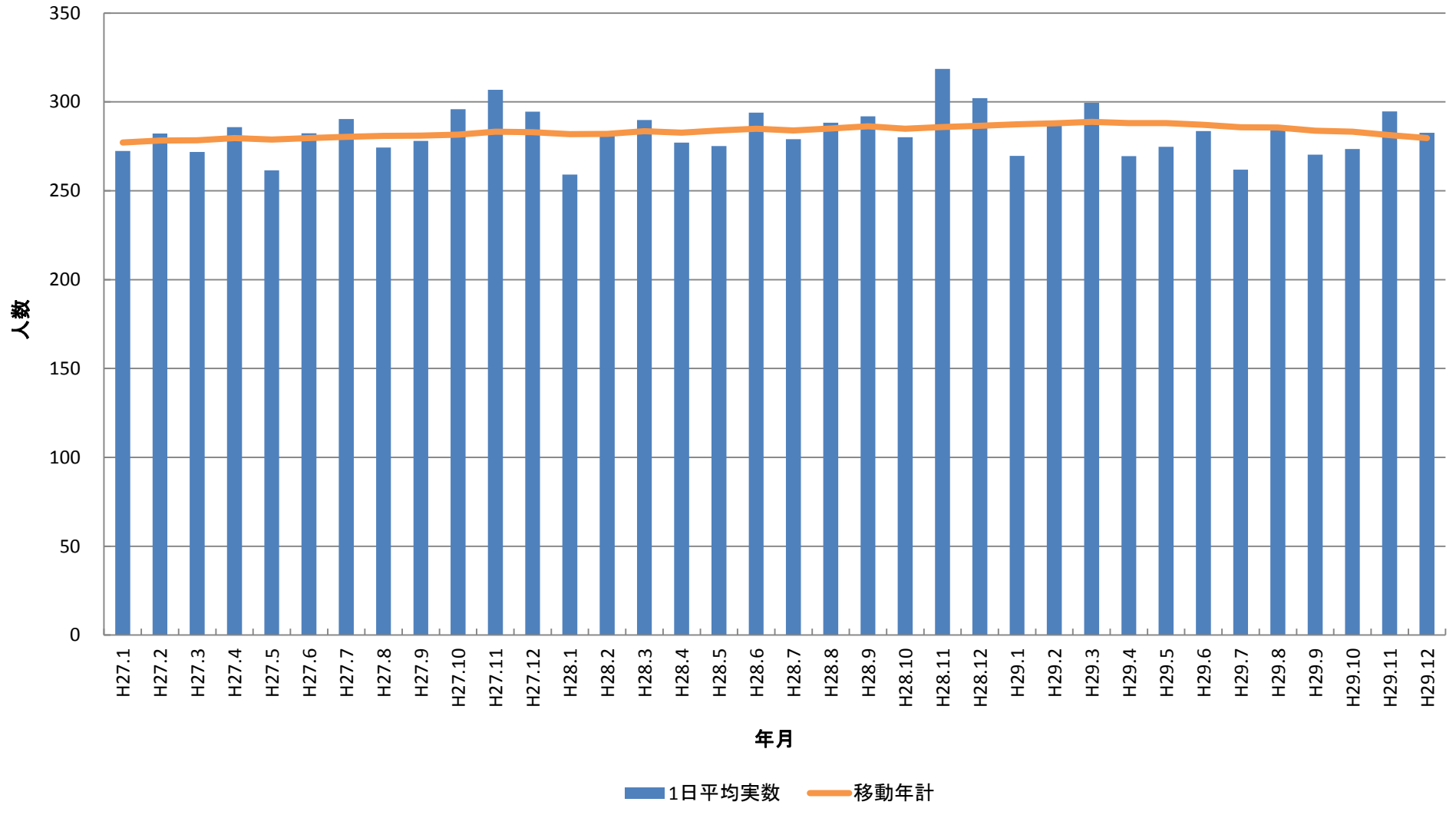
一般病棟平均在院日数(除外項目除外せず)



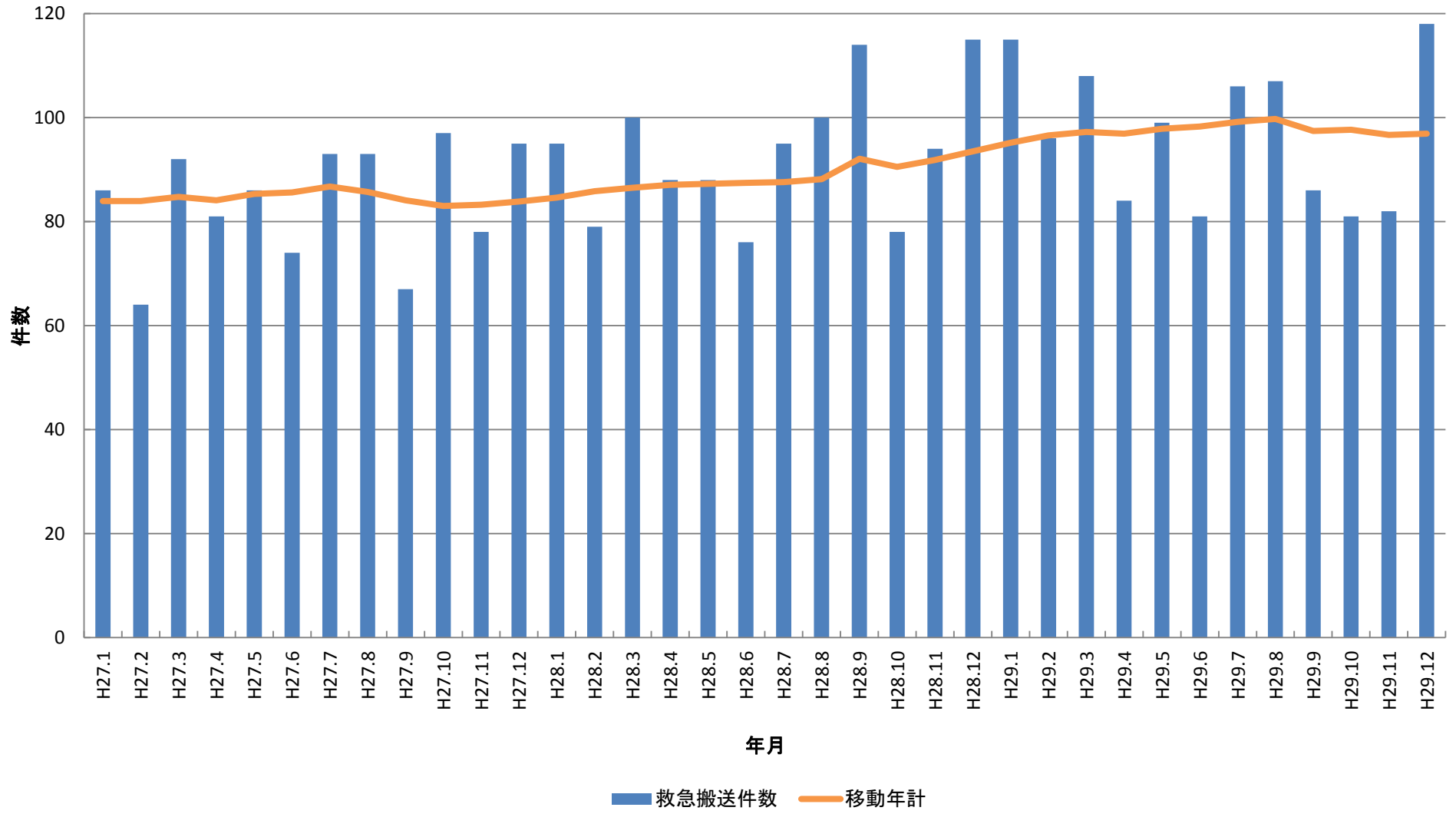
療養病棟在院患者統計



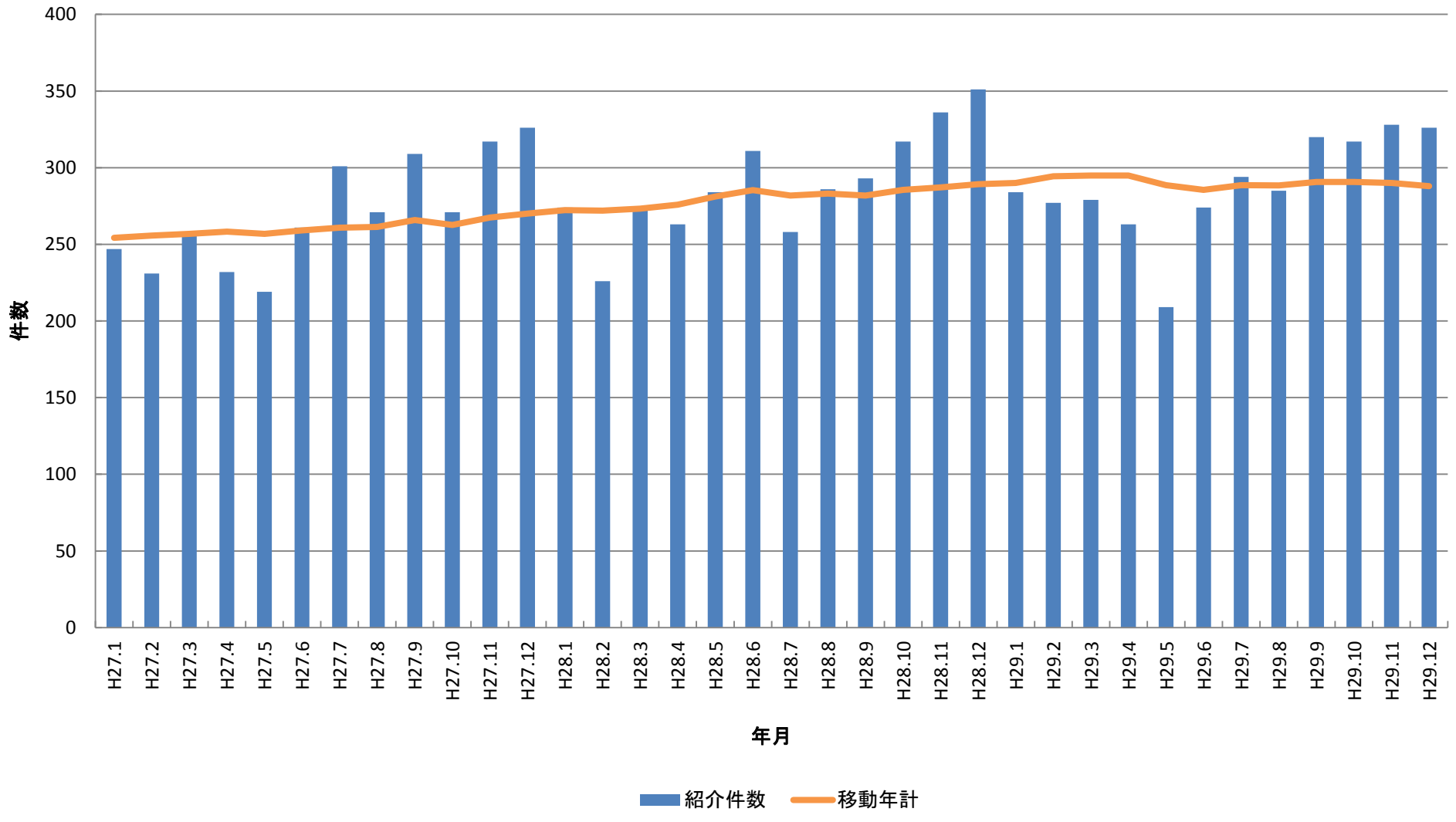
外来患者統計(1日平均)



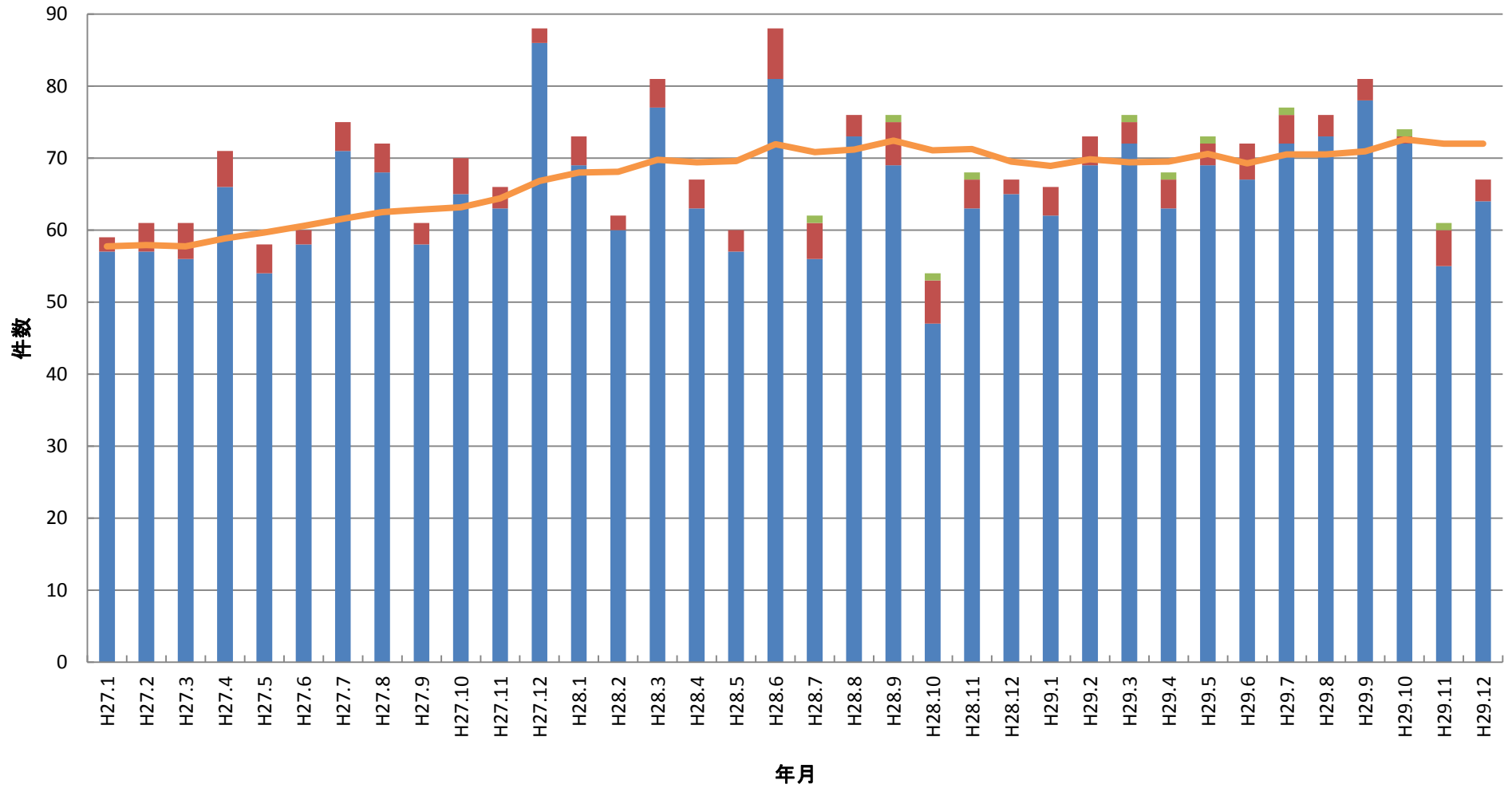
救急搬送件数



紹介患者件数

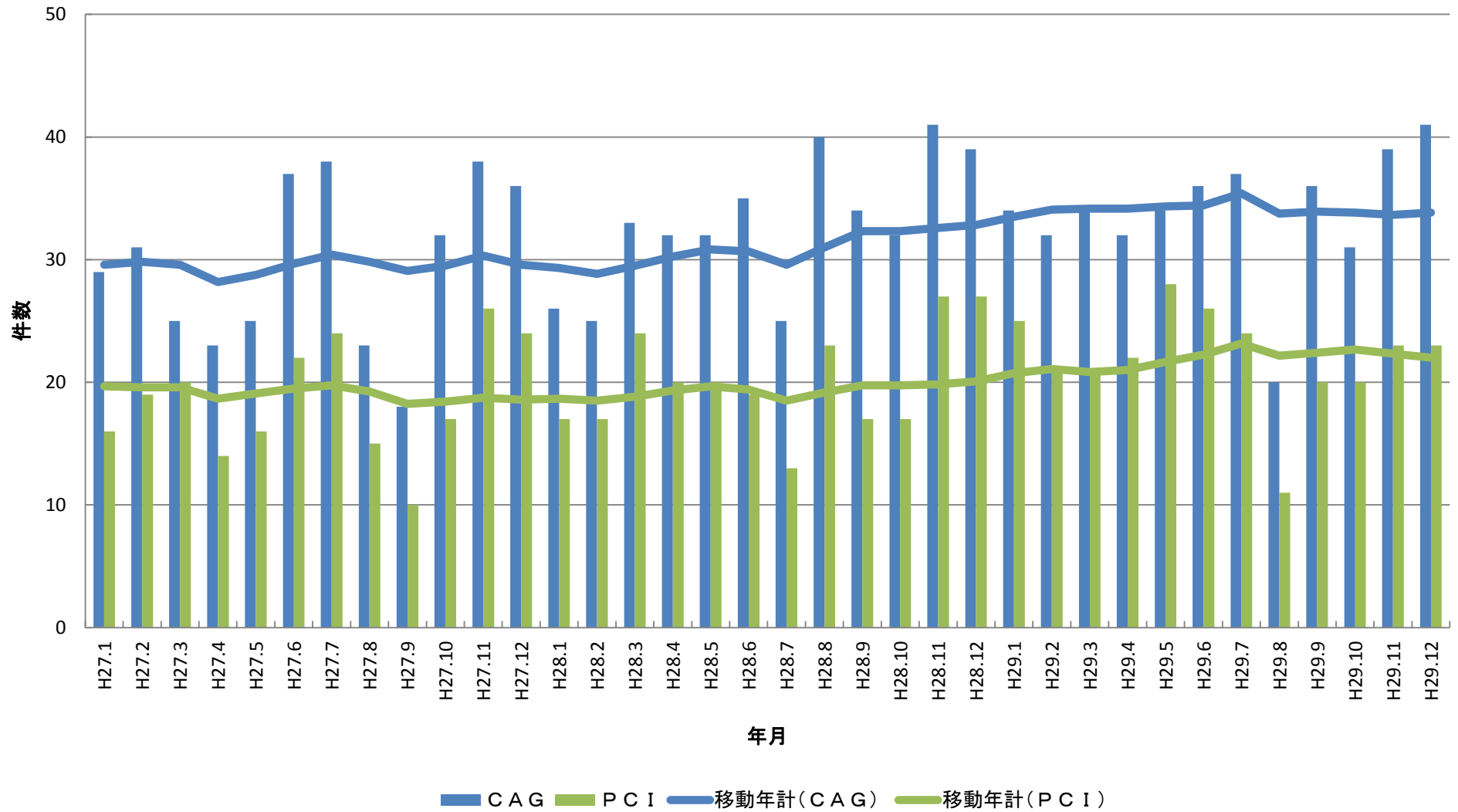


手術室件数

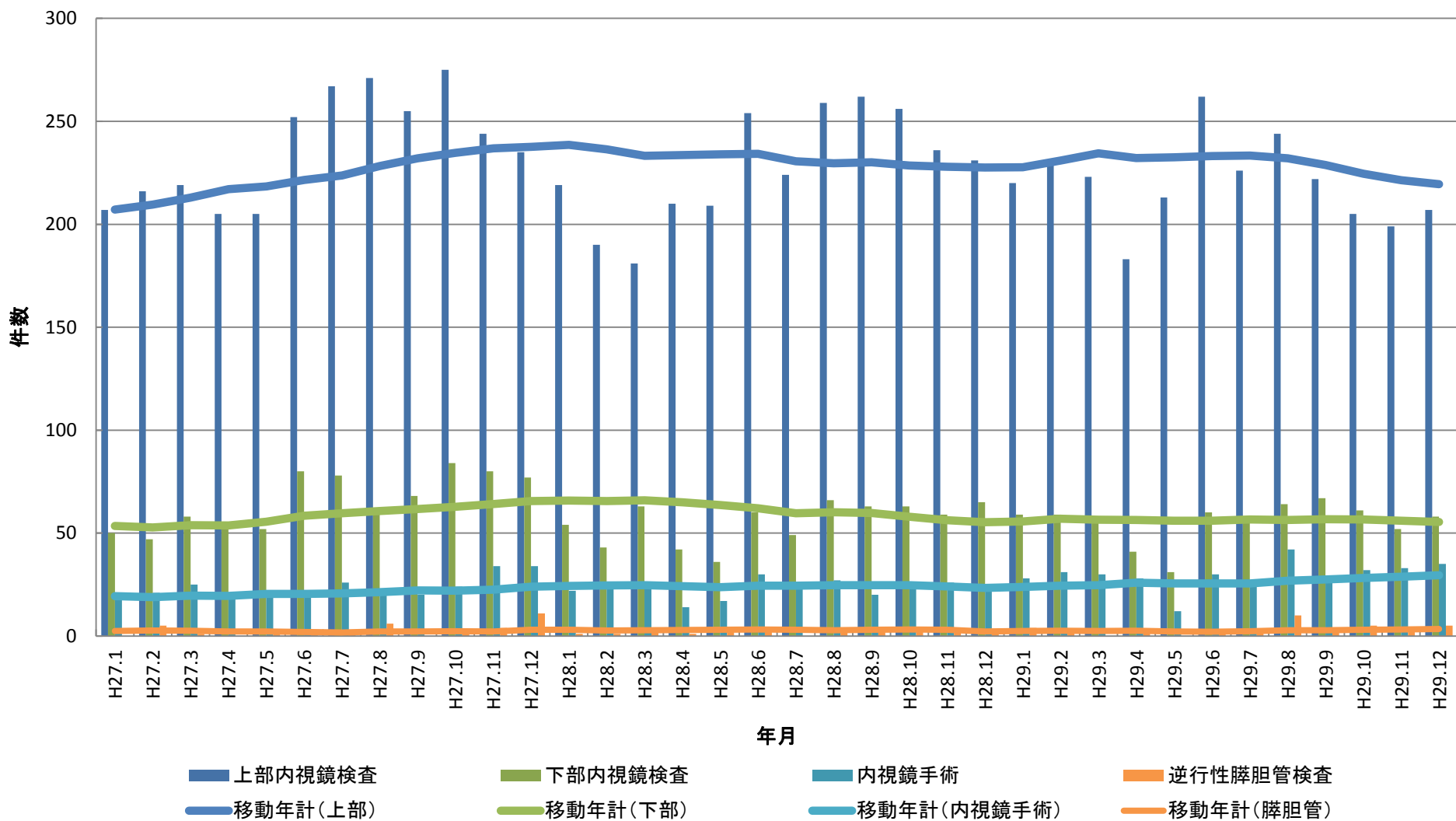


■ 手術(一般) ■ 鏡視下手術 ■ 開胸手術 ■ 移動年計(手術室)

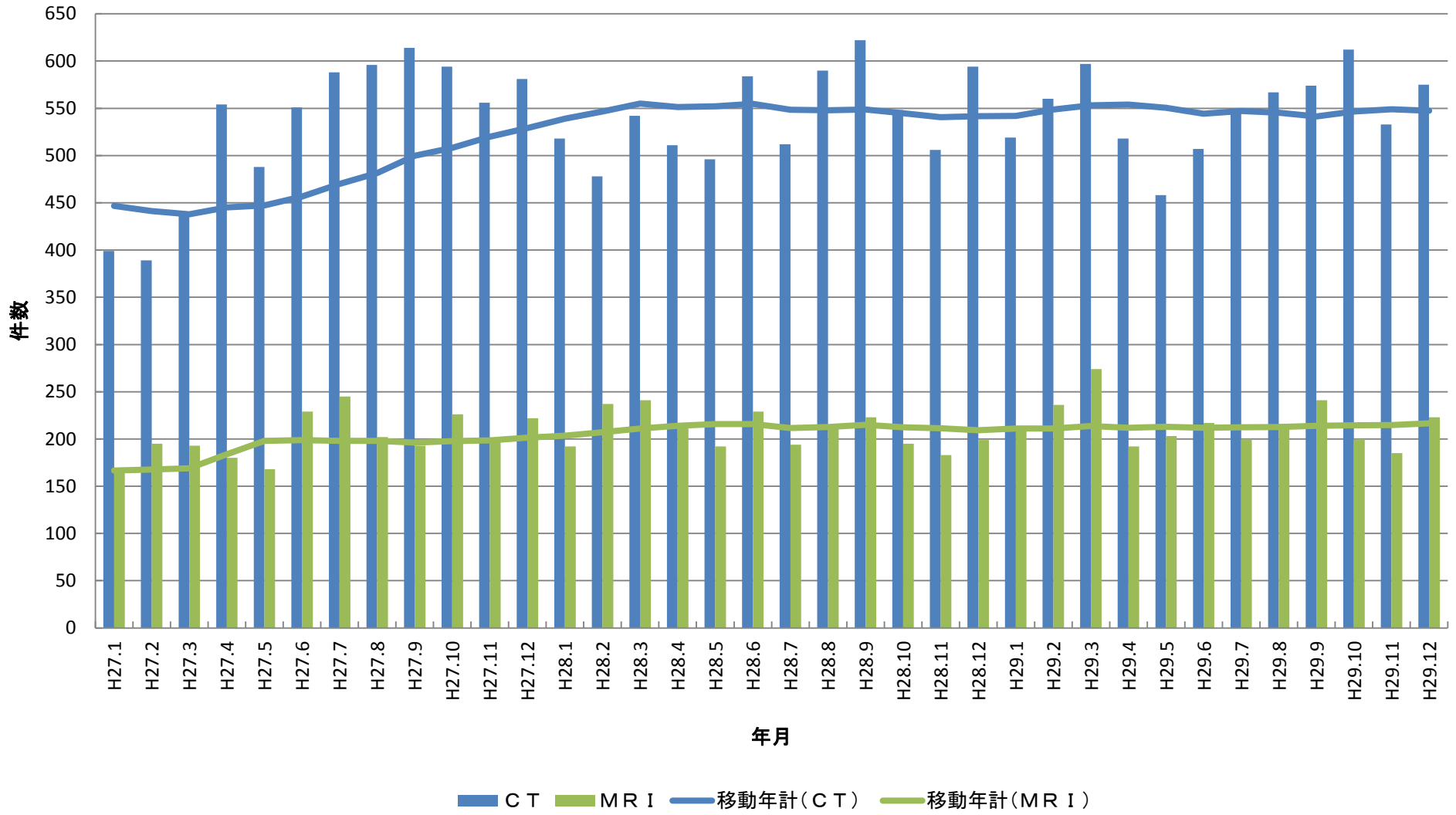
CAG・PCI件数



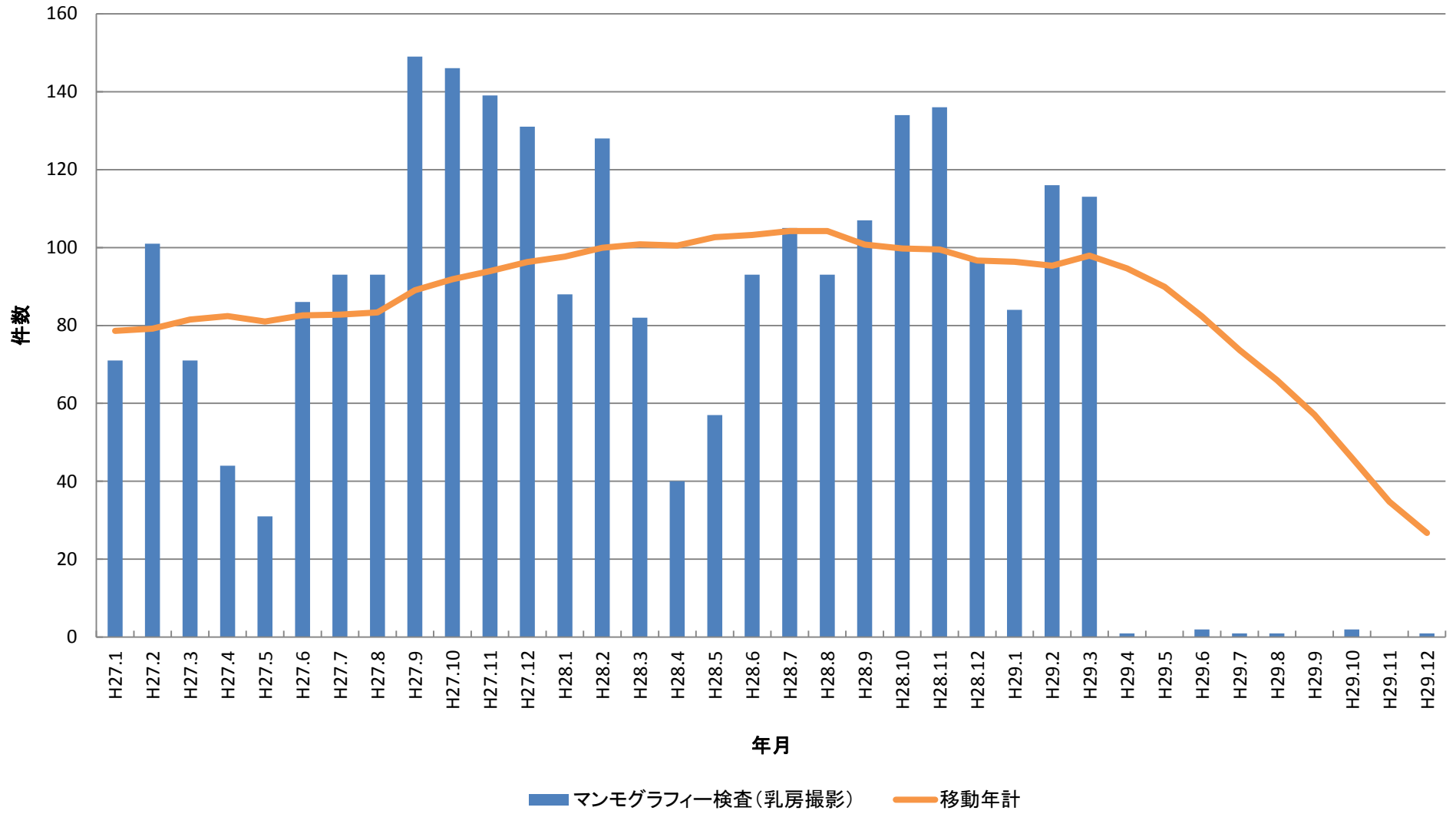
内視鏡検査・手術件数



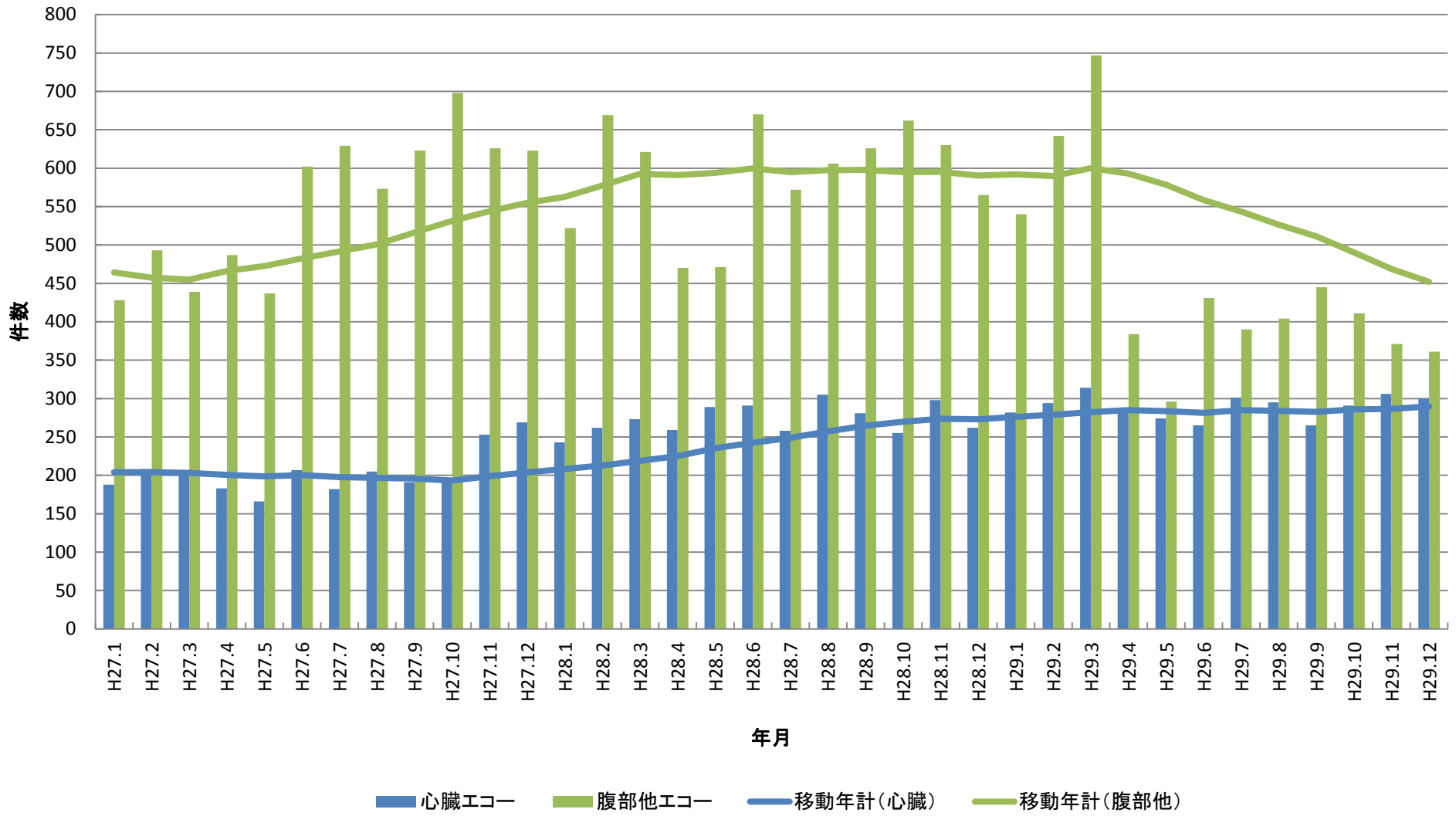
CT・MRI件数



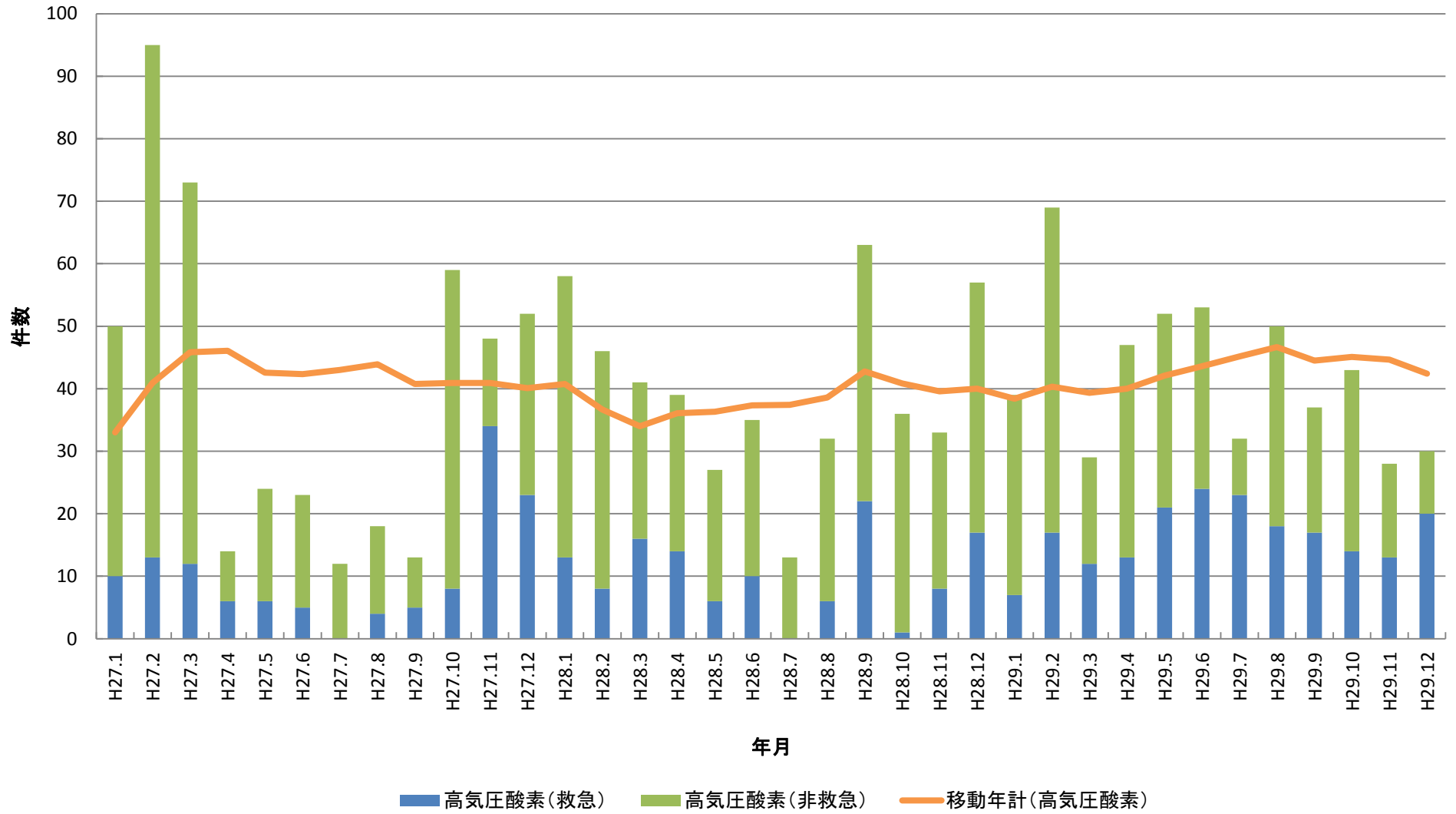
マンモグラフィー検査(乳房撮影)



超音波エコー一件数



高気圧酸素件数



ドック・企業健診件数

