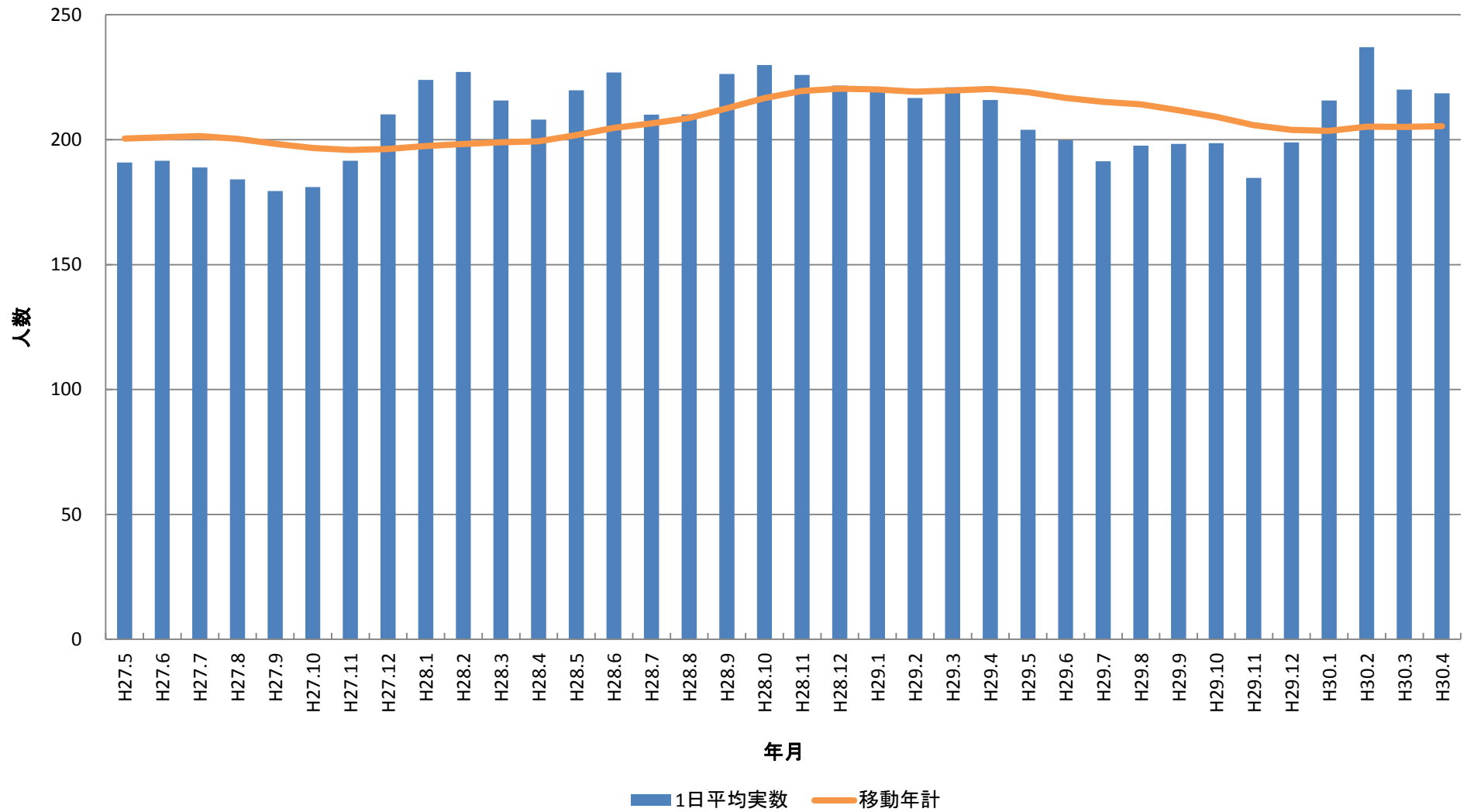
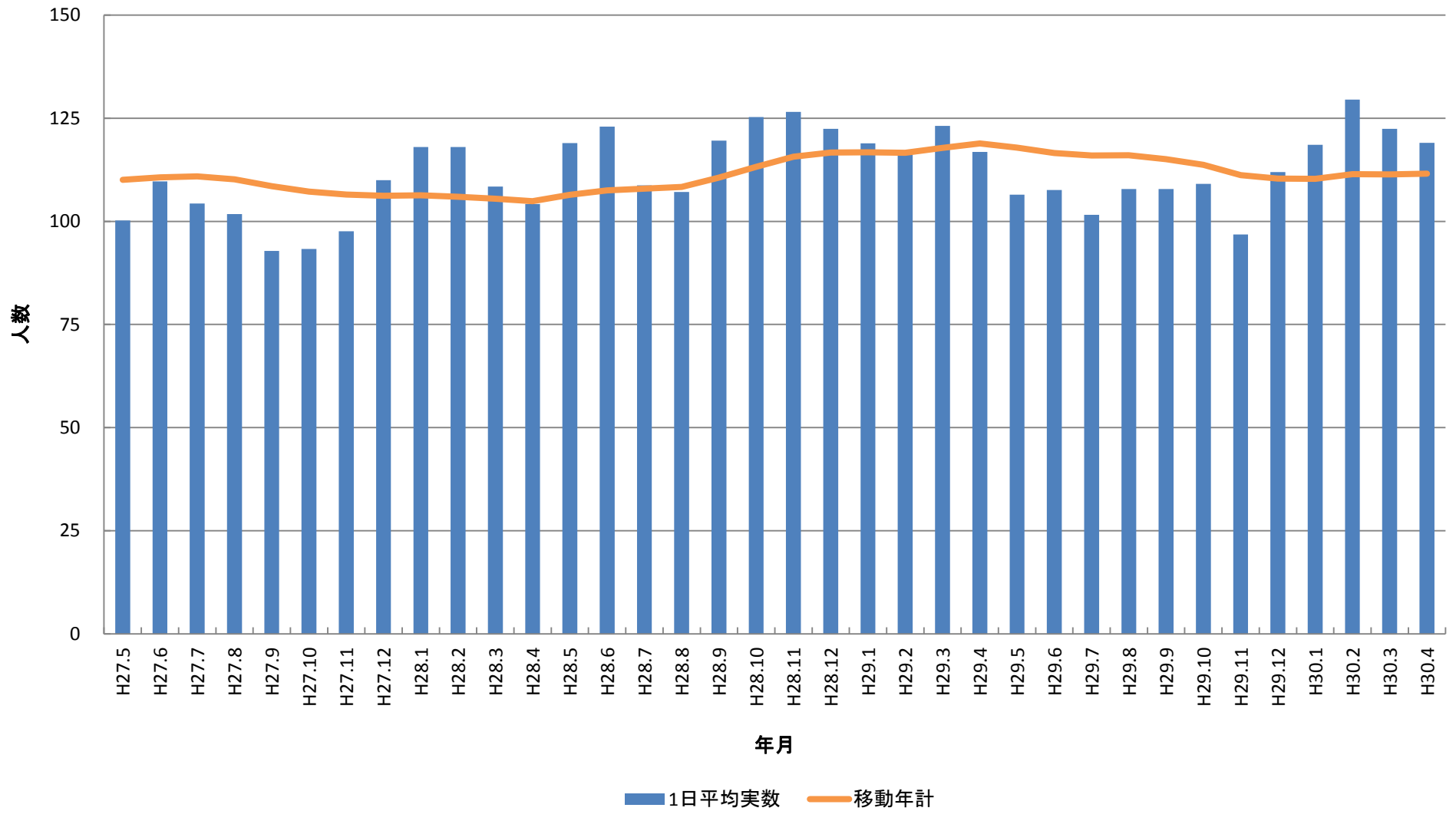


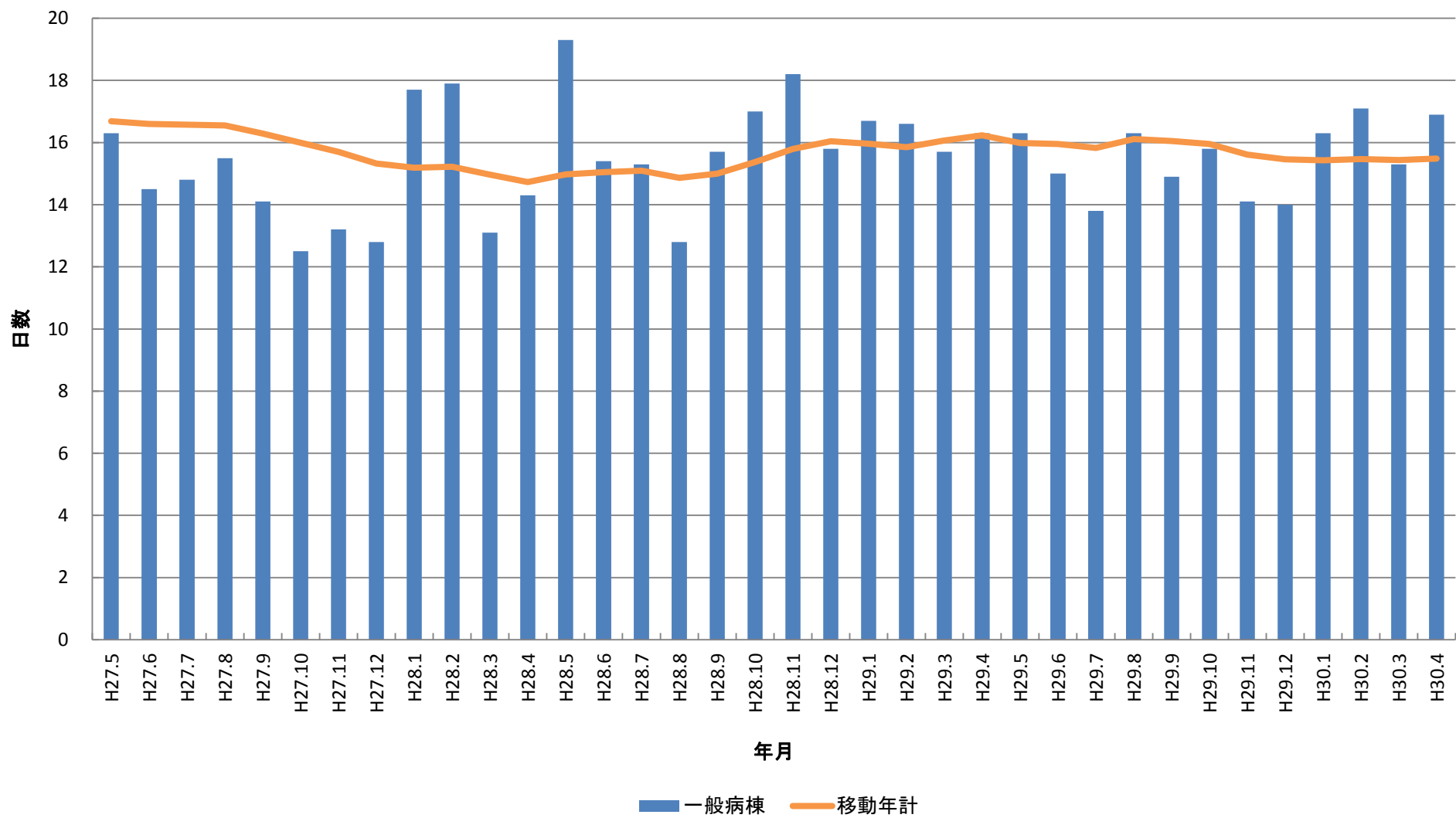
# 入院在院患者統計



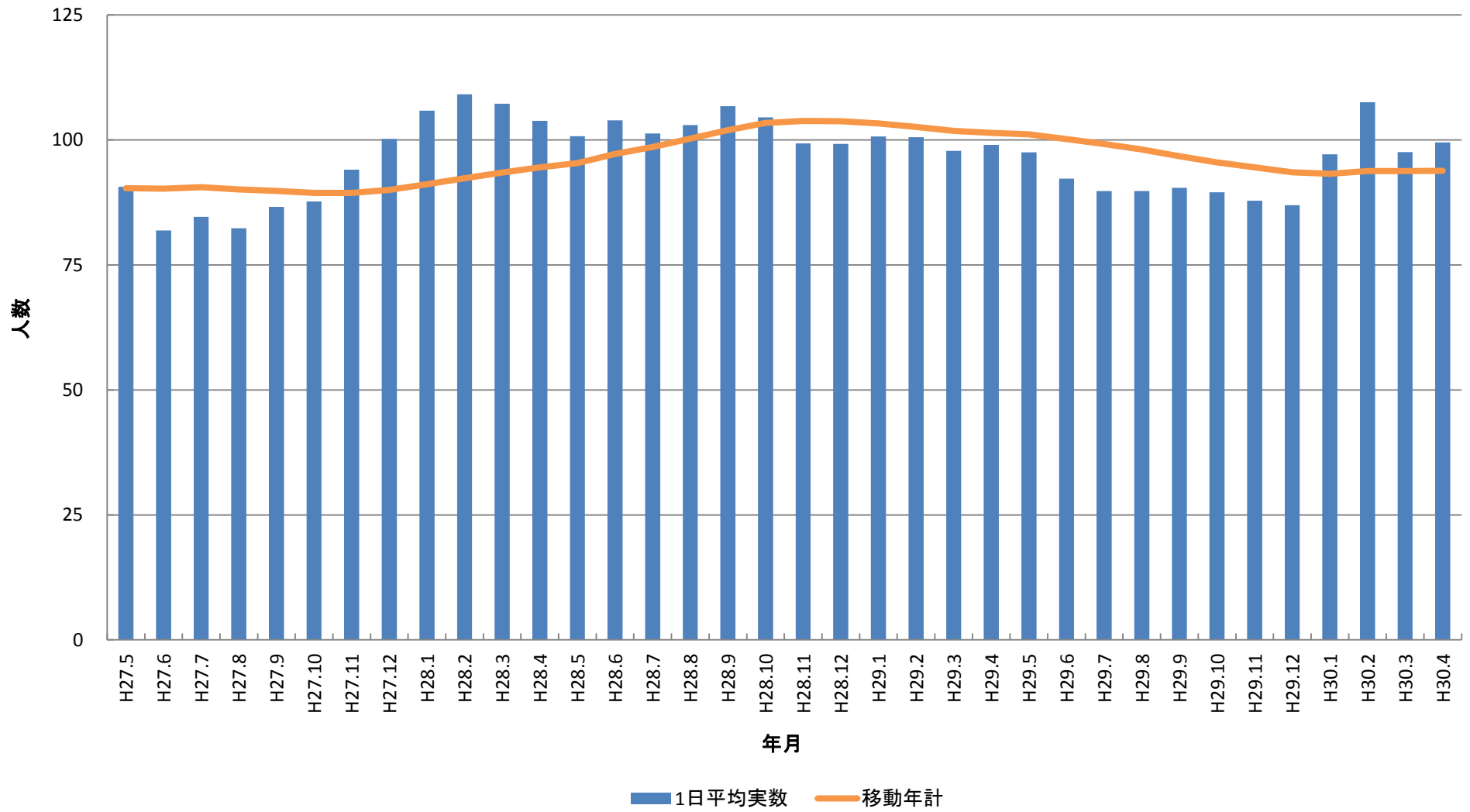
# 一般病棟在院患者統計



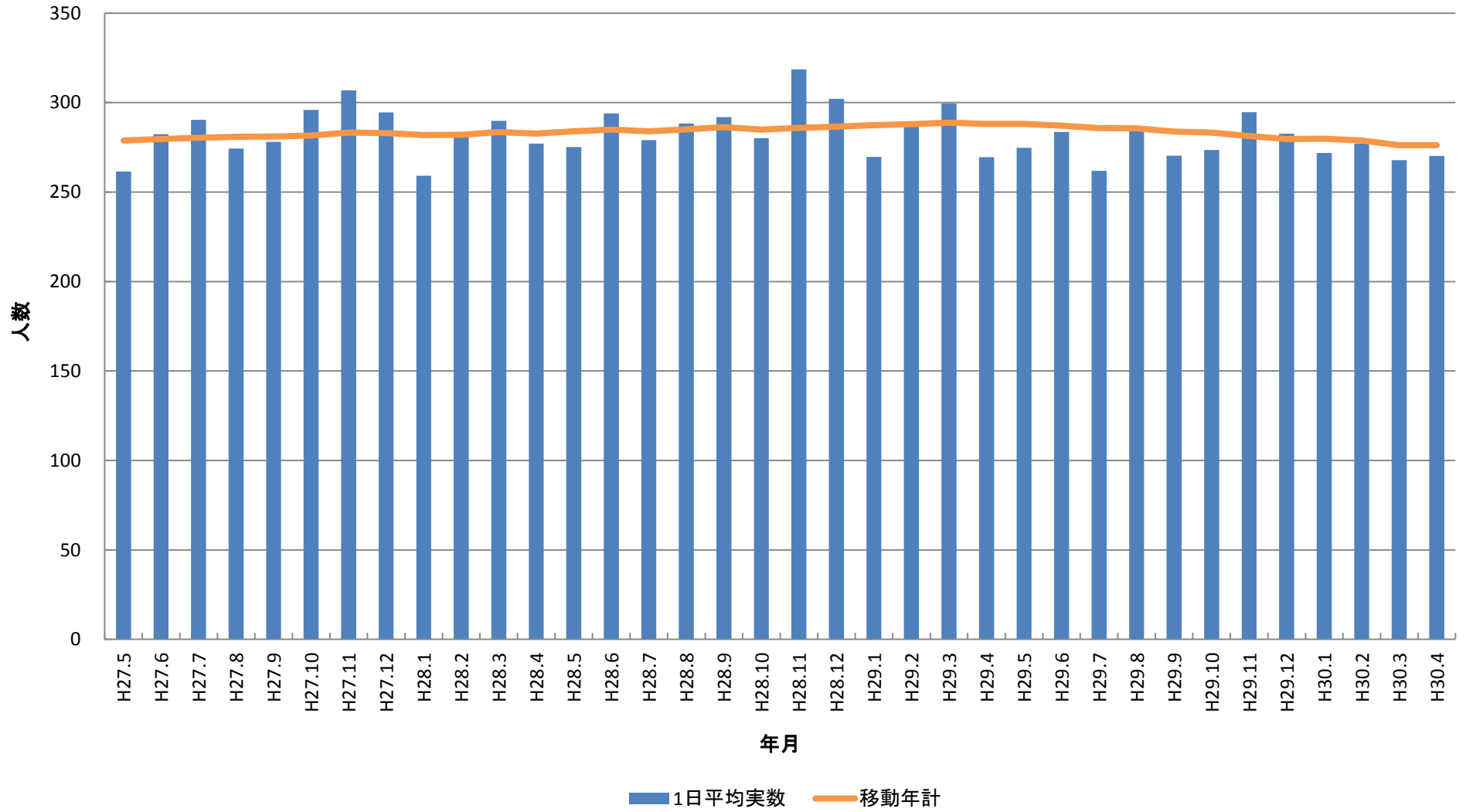
# 一般病棟平均在院日数(除外項目除外せず)



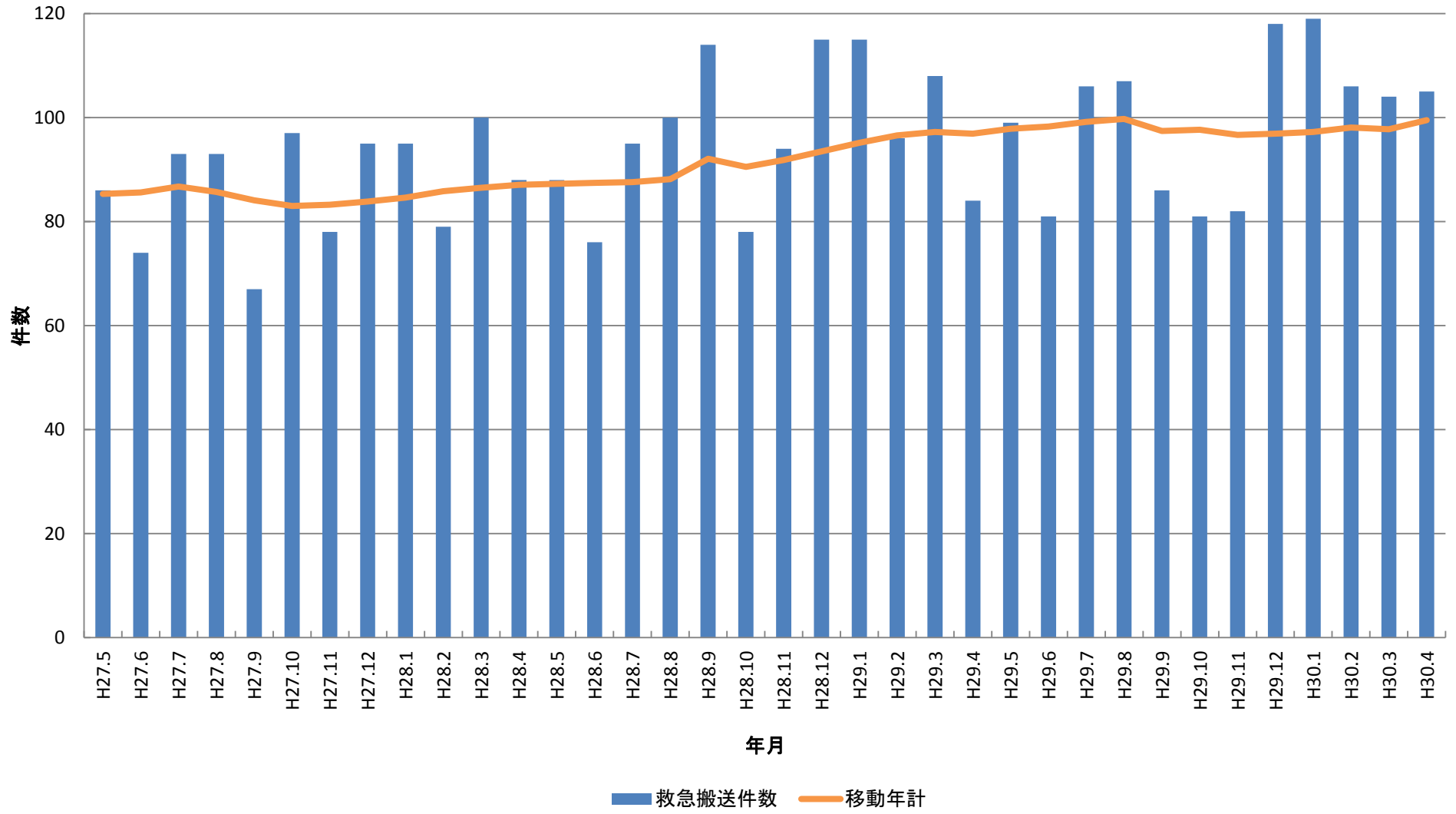
# 療養病棟在院患者統計



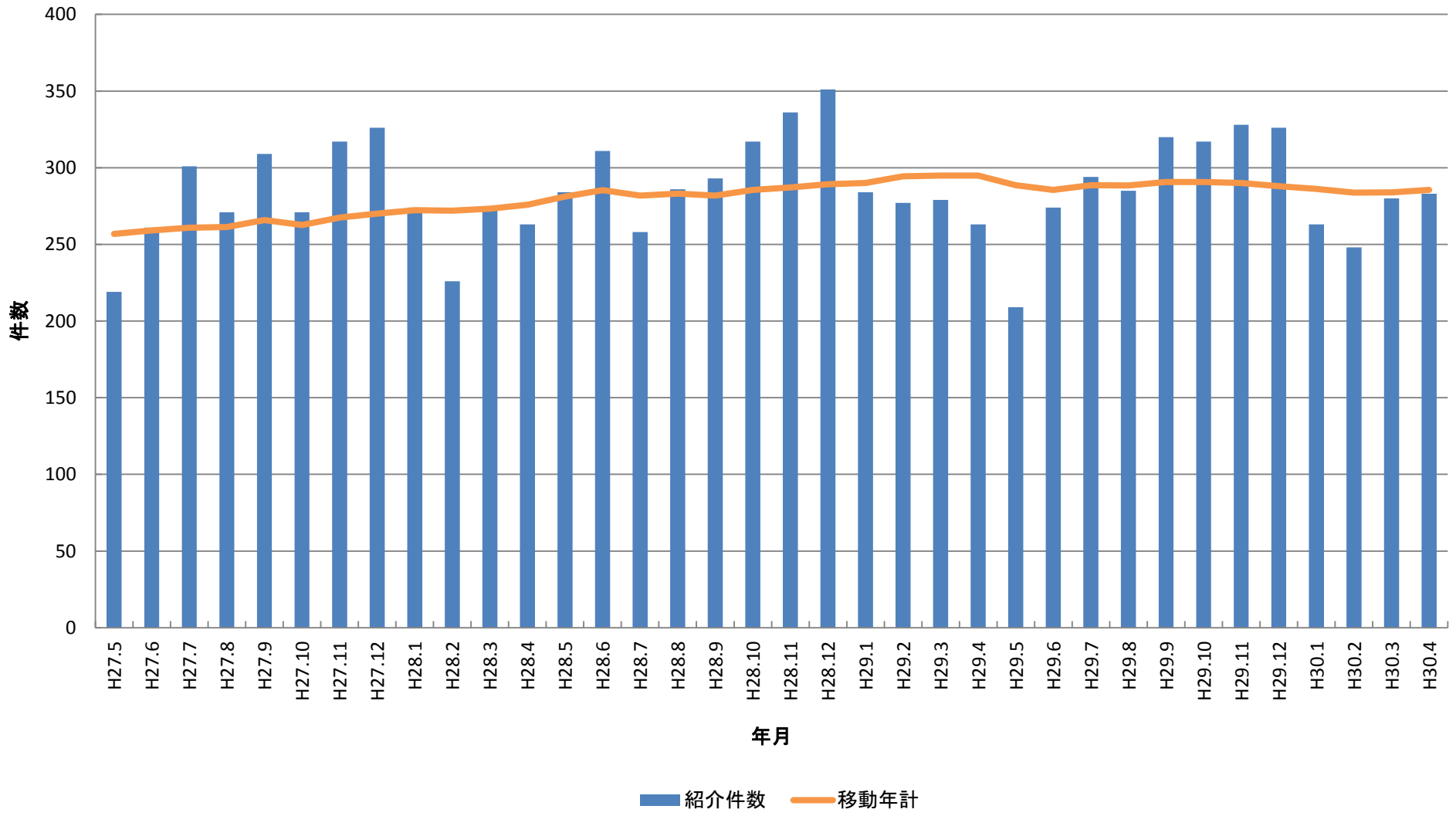
# 外来患者統計(1日平均)



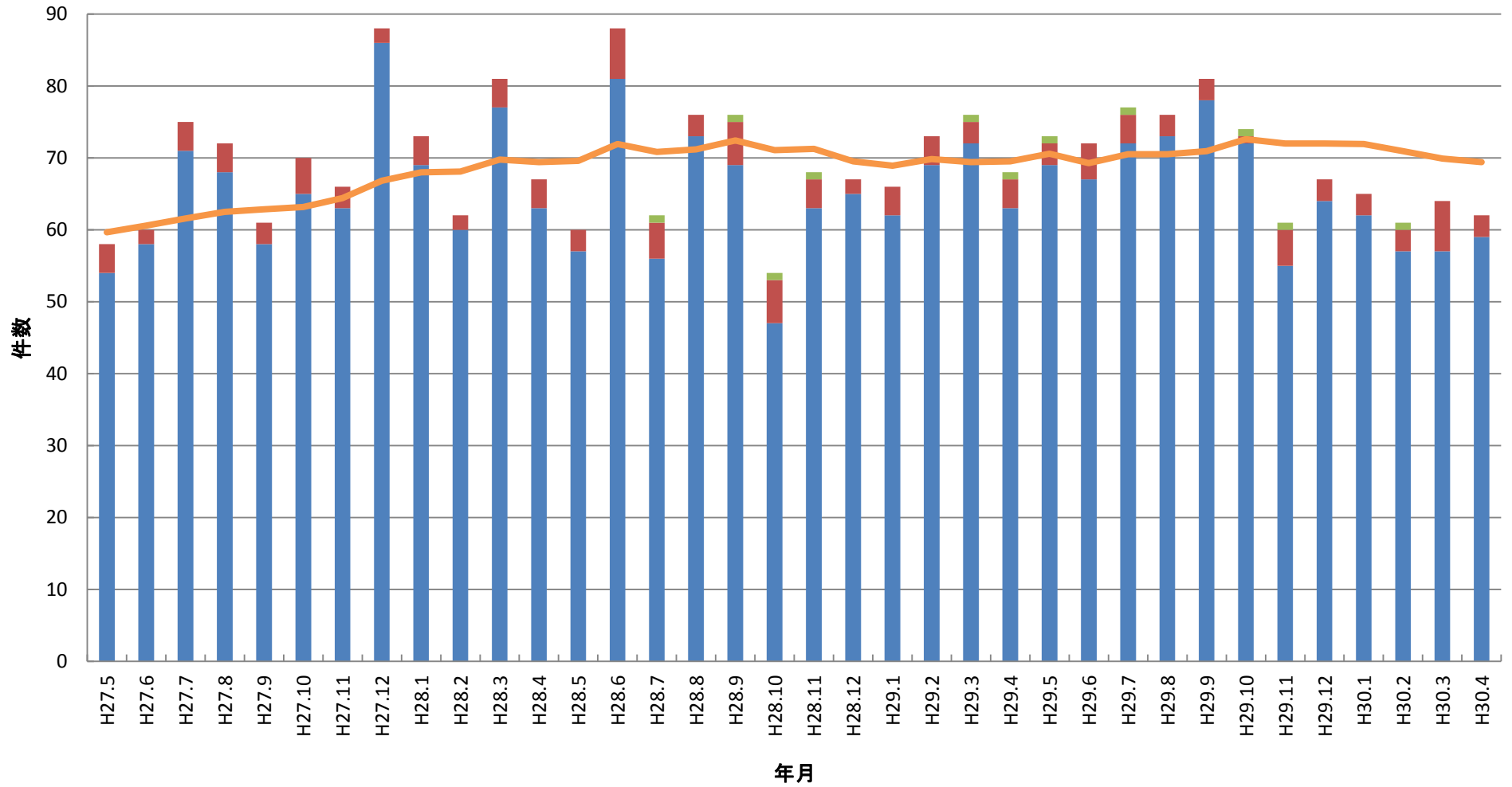
# 救急搬送件数



# 紹介患者件数



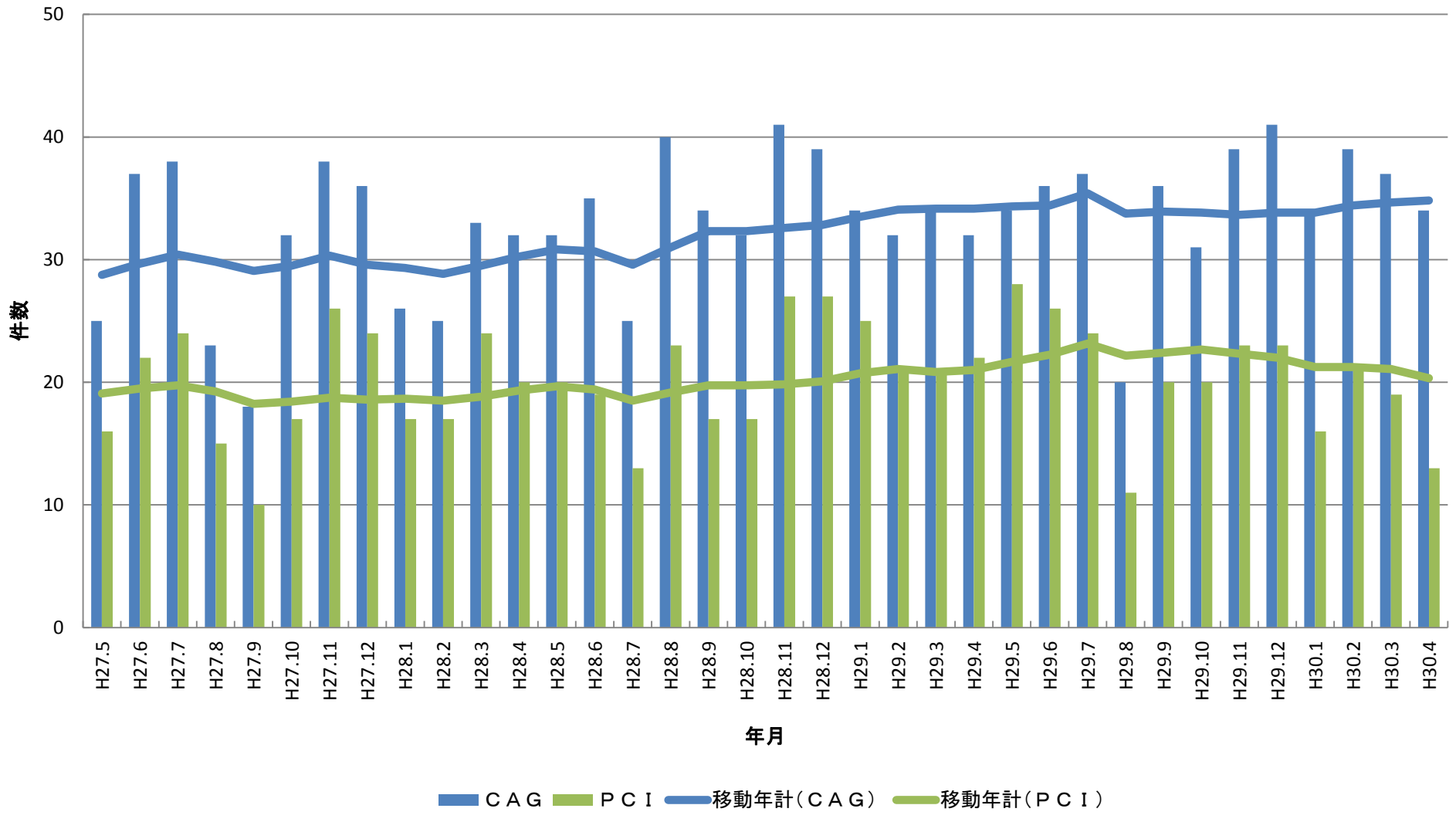
# 手術室件数



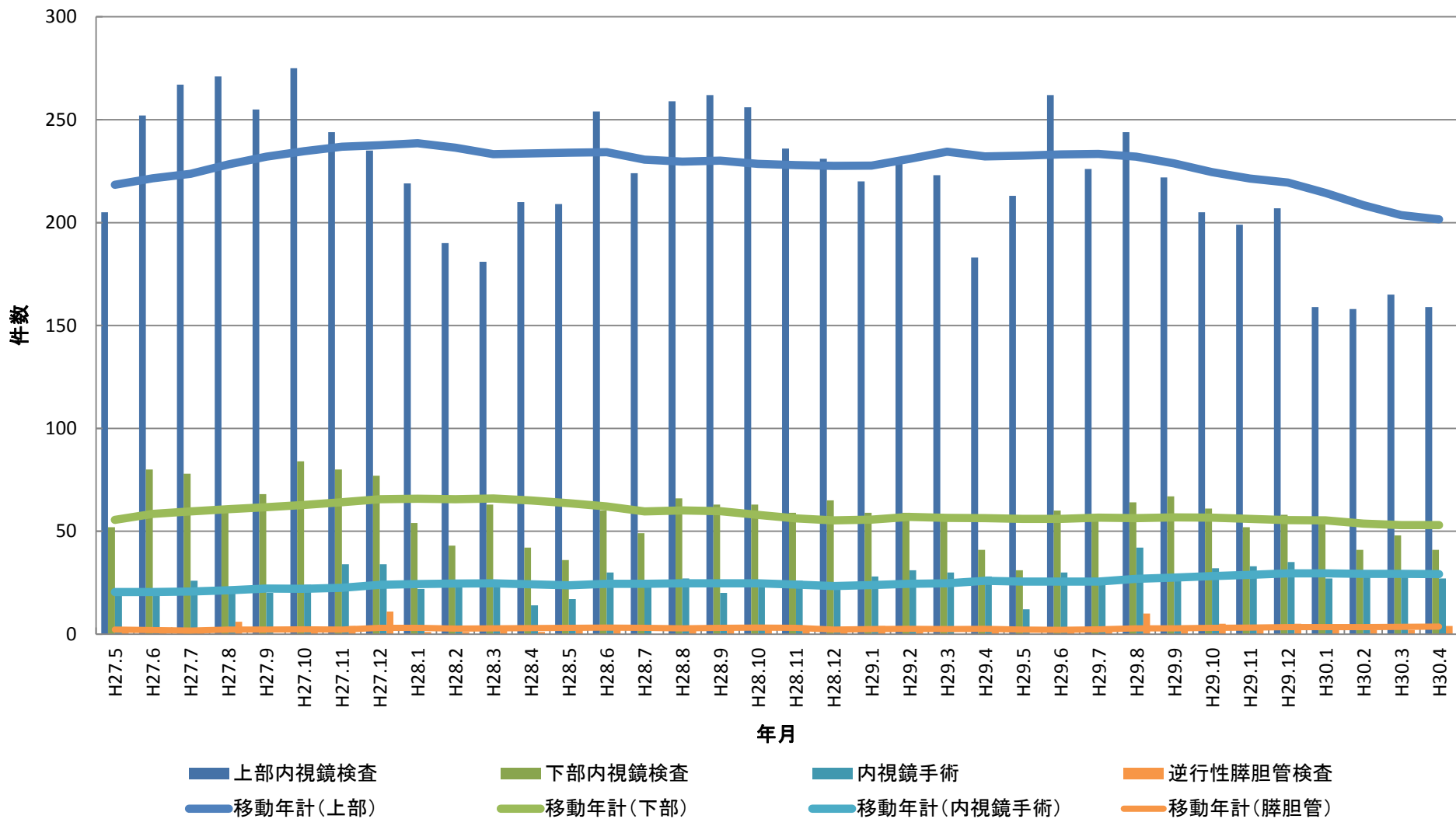
■ 手術(一般) ■ 鏡視下手術 ■ 開胸手術 ■ 移動年計(手術室)



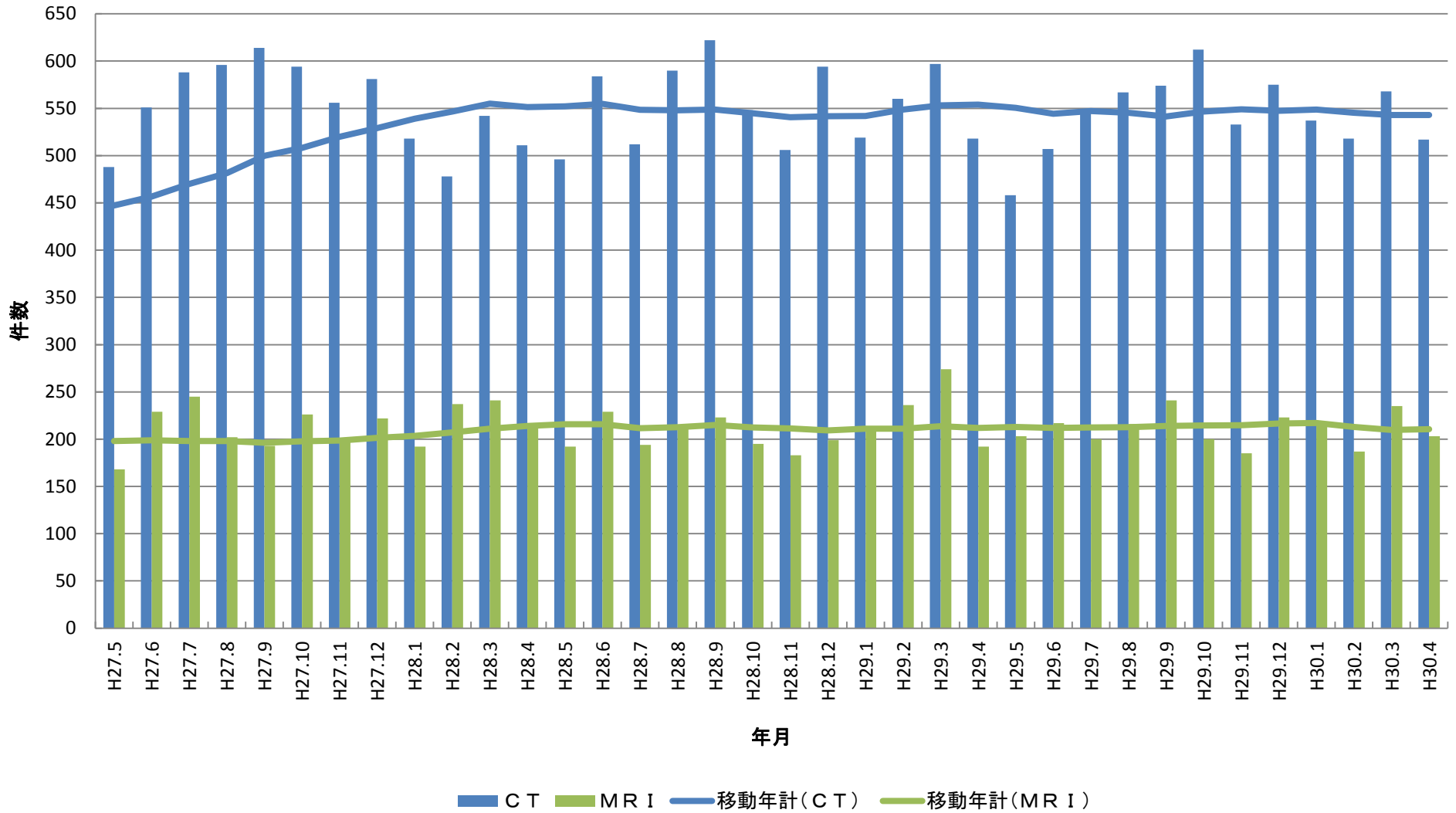
# CAG・PCI件数



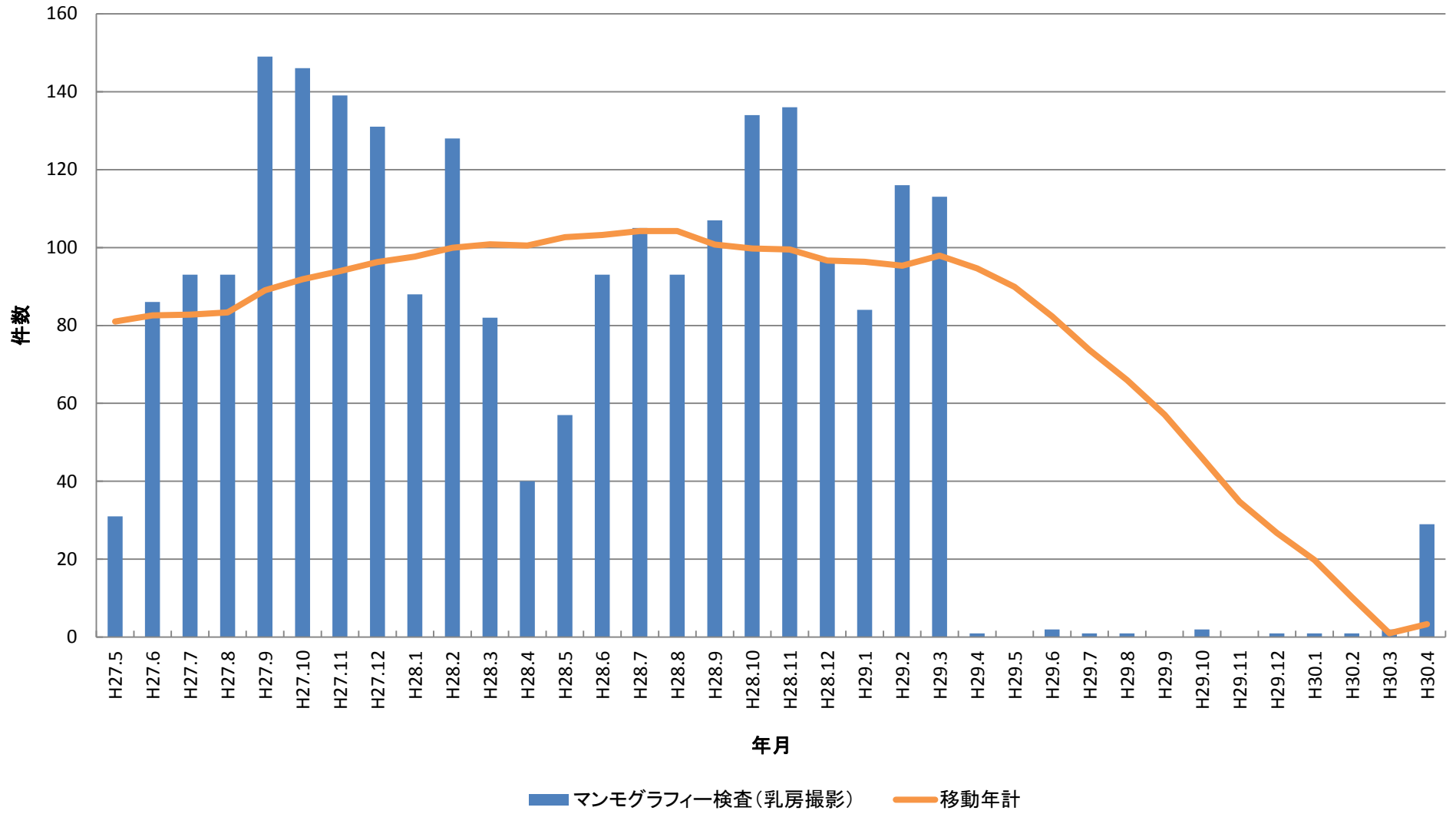
# 内視鏡検査・手術件数



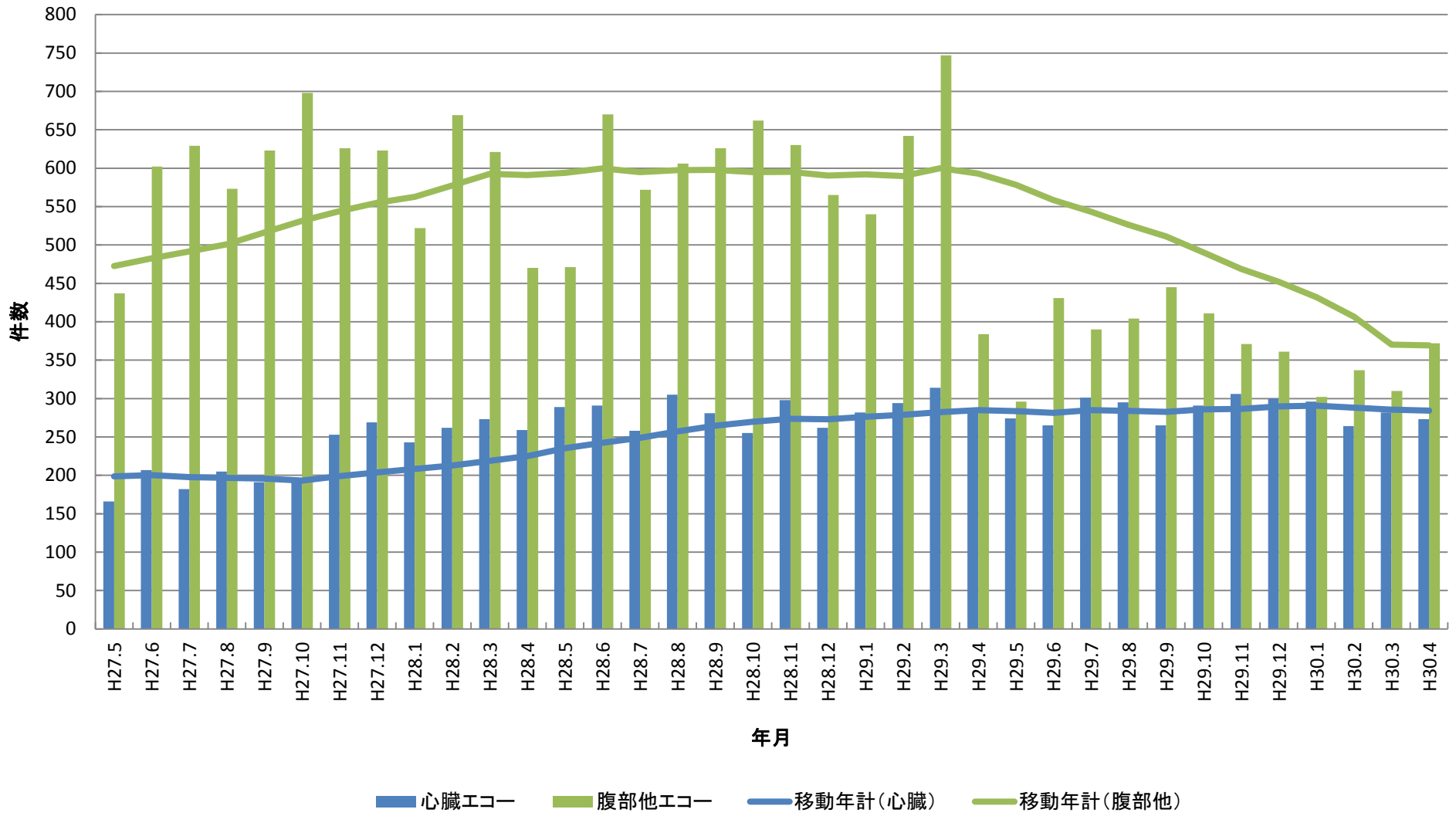
# CT・MRI件数



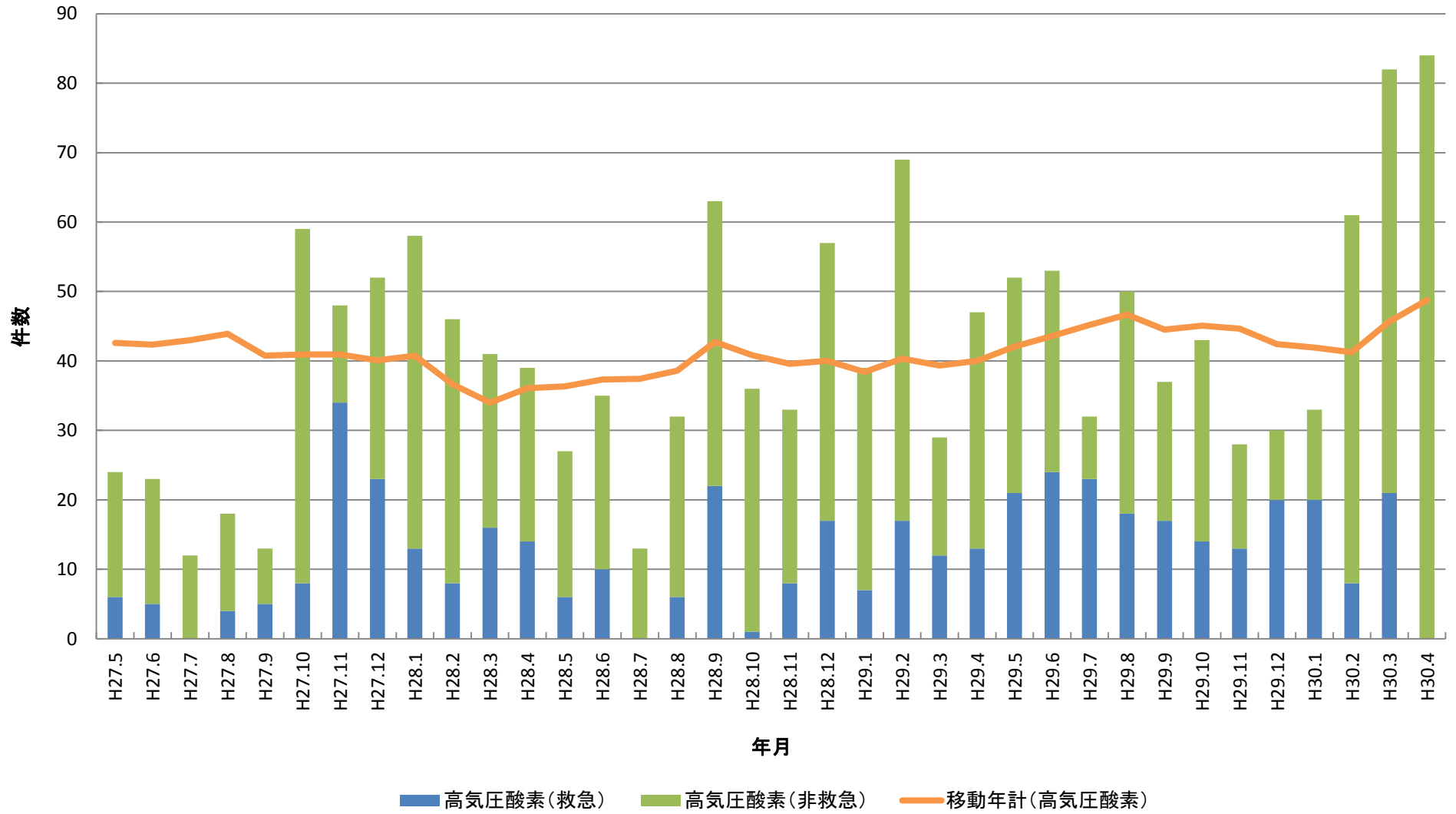
# マンモグラフィ検査(乳房撮影)



# 超音波エコー一件数



# 高気圧酸素件数



# ドック・企業検診件数

